

## R/3® System

The Session Manager makes it even easier for users of the R/3 System to navigate its applications, providing a user-specific configuration of the R/3 menu.

## Session Manager

### Reduction of the R/3 Menu and New User Interface for Navigating to the R/3 System

The Session Manager offers two main benefits: a new user interface for interacting with the R/3 System, and the ability to customize the menus. By introducing this new tool, SAP® is responding to customers' wishes and making it easier for them to work with the R/3 System.

The most significant thing about the Session Manager is how it lets you narrow the scope of the menus. During system implementation, a corporate menu containing the R/3 functions a company will actually use is automatically generated. Based on the corporate menu, a user-specific menu can then be created for each user.

This menu contains the application components and transactions needed by the user to perform the appropriate tasks. These menus are subsequently available to users along with a new interface to facilitate efficient, effective work.

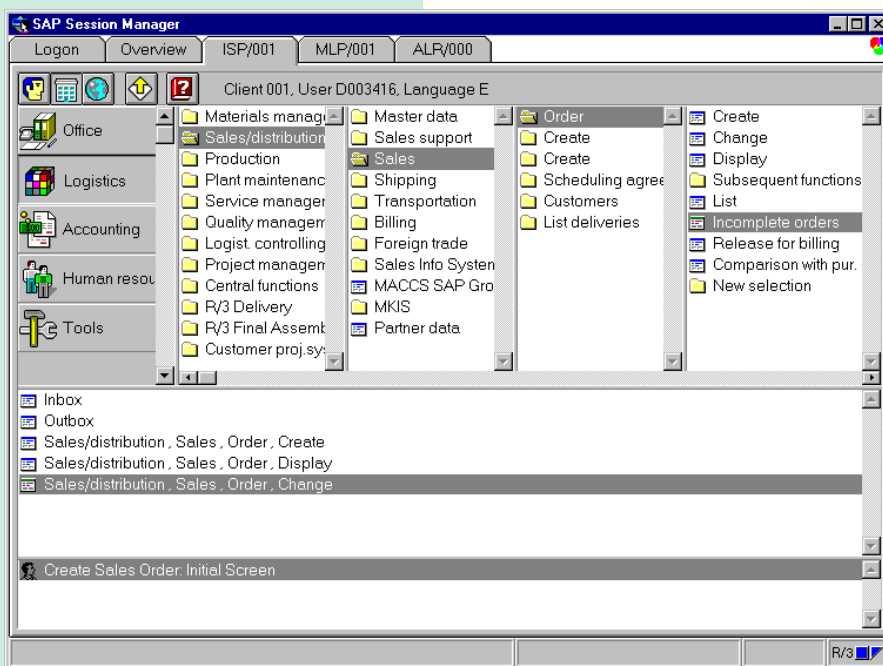
#### The New User Interface

The Session Manager's new user interface greatly facilitates everyday work with R/3 3.0 applications. Navigating to the applications becomes faster and simpler.

You use the Session Manager to log on to one (or more) R/3 Systems, whereupon the central work screen appears. That is where you navigate to the R/3 System. By clicking with the mouse, you can choose either of three different views of R/3: the complete SAP menu, your enterprise-specific menu, or your user-specific menu. The corporate menu only contains those transactions that your enterprise actually uses, and the user-specific menu only contains those transactions that your user should use. This substantially improves efficiency by reducing clutter and allowing you to focus better. To directly start any transaction, simply double-click it. Or use drag-and-drop.

You can also individually configure your own personal interface. For example, you can place frequently called transactions in a kind of "bulletin board" for easy access. The functions you use most are then right at your fingertips at all times.

It is, of course, also an easy matter to restructure the screen itself: the number of displayed menu items, the widths of the columns, the font sizes, etc.



## Menu Configuration

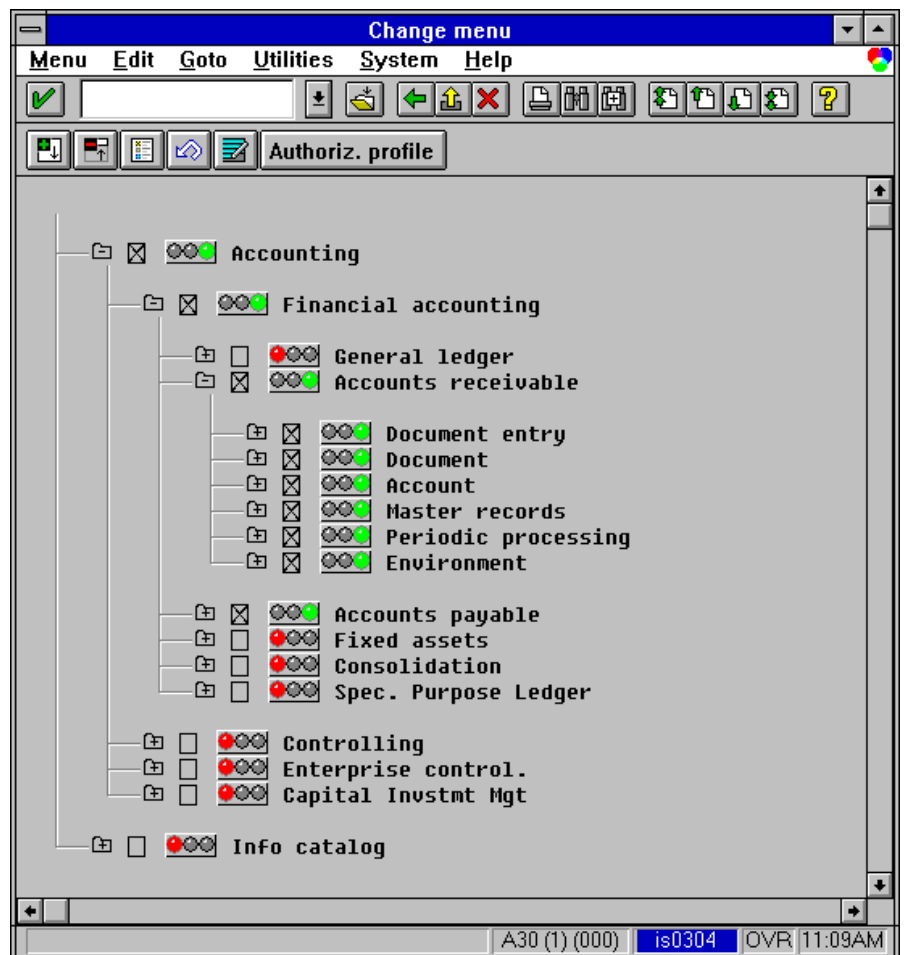
The overall SAP menu still furnishes a complete view of the R/3 System. The corporate menu shows only those parts of it that are actually used while the user-specific menu displays only those parts needed by the user. During implementation of the R/3 System, those application components are selected that a company needs and intends to use. These serve as the basis for automatically generating the corporate menu for the Session Manager. It's as simple as that — no extra work is required.

Generation of the user-specific menu is based on the corporate menu and takes place in two stages. Firstly, appropriate individual menu branches are selected from the corporate menu. The corporate menu is presented as a tree, with the sub-menus as branches and the individual transactions as leaves. A selection can be made simply by clicking on the various parts of the tree. The second step is to assign this choice to the individual user. Multiple assignments are also possible. Generation of the user menu then takes place automatically. If the user administrator changes the user allocation, e.g. because the user has changed department, generation of the new menu takes place automatically the next time the Session Manager is started.

The Session Manager makes using the R/3 System considerably easier. It opens up new ways for both end users and administrators to work with the R/3 System even more productively.

## Requirements and Availability

In order to use the Session Manager, you need Windows 95 or Windows NT 3.51 front ends. With R/3 Release 3.0e the Session Manager will be available with its entire functionality. It will include not only the new user interface, but also the overall SAP menu, your corporate menu, and your user-specific menu.



## Technology and Service

R/3 software is based on client/server architecture. R/3 is designed as an open system for use on operating systems from a variety of vendors. Along with the software, SAP offers you a complete spectrum of services: professional consulting in organizational and technical issues ranging from project planning to system implementation, qualified staff training and 24-hour hotline support.

SAP's quality management system for software development meets the international ISO 9001 standards.

Find out more. Call or write us.