

R/3® System

INFORMIX-OnLine Dynamic Server, the leading Unix database system, is now also available for R/3 on Windows NT. Informix's database architecture, acknowledged by leading analysts as the most advanced technology on the market, sets new standards for the Windows NT environment in terms of scalability, easy administration and functionality.

INFORMIX-OnLine Dynamic Server for SAP® R/3 on Windows NT

Superior Performance

In October 1996 INFORMIX established a new world performance record for databases running on Intel systems under Windows NT. In a standardized benchmark test certified by independent observers, INFORMIX scored 6.843 TPC-C transactions. This result, unmatched by any other database vendor, underlines once more the efficient hardware resource management of OnLine Dynamic Server for Windows NT and its enormous scalability potential for R/3 under Windows NT.

Easy to administer with SAPDBA

OnLine Dynamic Server is designed for dynamic on-line system administration. A GUI-based administration tool for SAP R/3 (SAPDBA) greatly simplifies administrative tasks such as space management and system monitoring.

With this fully graphical tool, the administrator can monitor the availability and performance of the database, manage disk space and reorganise database tables.

As databases expand, it is essential to optimize table sizes and to distribute tables across various locations. The OnLine Dynamic Server database offers intelligent disk management functions to help avoid unnecessary database reorganisation.

Advantages of the INFORMIX Online Dynamic Server

- Superior Performance
- Easy to administer with SAPDBA
- Scalable Architecture
- High Availability
- Maximum data security
- Customized for SAP R/3
- International References
- INFORMIX and SAP – A strong partnership

SAPDBA for INFORMIX-OnLine provides the database administrator with detailed information on the status of all or specific tables, enabling him to explicitly reorganise key areas of the database. This is generally done much faster than a complete database reorganisation. Instead of using the graphical tools, the Database Administrator can also perform administrative tasks via operating system functions, particularly helpful when automating routine operations.



Already productiv: KLUDI Armaturen, Germany



Scalable Architecture

OnLine Dynamic Server's core technology is based on Informix's industry-leading Dynamic Scalable Architecture (DSA). A database architecture designed to fully leverage uniprocessor systems, local networks, cluster systems and SMP/MPP hardware architectures, DSA delivers breakthrough database scalability in any environment, including the Windows NT operating system.

As a result, there is endless growth potential for all kinds of R/3 applications – from test and development systems to high-end production systems with hundreds of users – without having to change the underlying database architecture.

High Availability

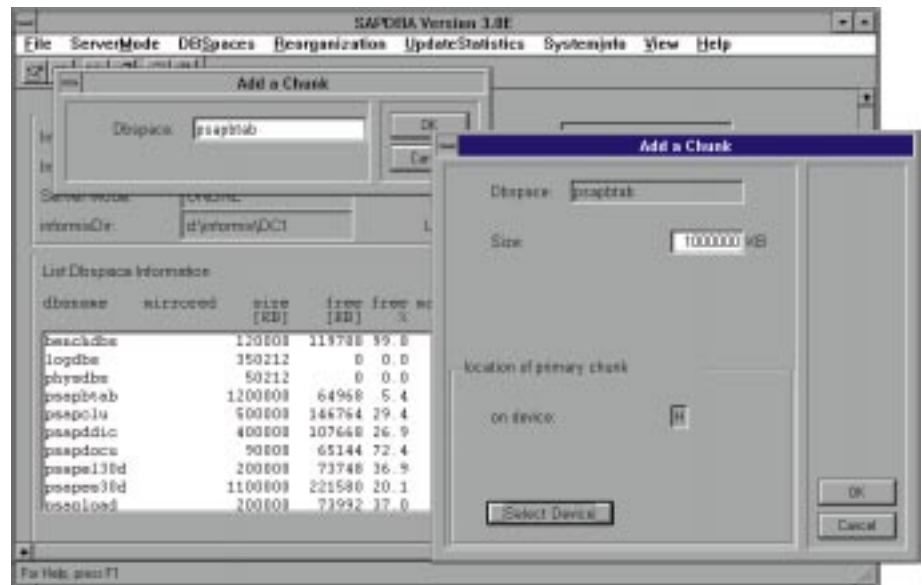
The ability to mirror critical R/3 database areas or individual tables is a standard feature of INFORMIX-OnLine Dynamic Server and essential for high availability and fail-safe operation. Depending on the parameters selected by the system administrator, not only log files but also mission-critical R/3 application data are mirrored. In addition, OnLine Dynamic Server enables system administrators to replicate the R/3 database on a secondary server (hot stand-by). To save costs, the stand-by system may be smaller than the primary system.

Advanced tools for R/3 system monitoring provide diagnosis and troubleshooting options not included in standard R/3 functionality.

Maximum Data Security

Understanding the increasing demands of SAP users, Informix has included a score of data availability and data security functions in the standard INFORMIX-OnLine Dynamic Server package. For example, R/3 data can be copied to external media without interrupting user activities (on-line backup).

With increasing data volumes, administrators can perform parallel R/3 data backups using several tape drives. As a result, backing up a full production system takes only a fraction of the time required for nonparallel backup



SAPDBA for INFORMIX-OnLine: Extending the Database

operations. Parallel database backup is supported by a large number of storage management systems available today.

Customized for SAP R/3

The efficiency and performance of a database system in an R/3 environment depends largely on the number of users and the data volumes it supports. For this reason, not all currently available database software is suitable for deployment with SAP R/3.

In order to meet these requirements, Informix has provided OnLine Dynamic Server with specially customized functions that safeguard smooth operation and maximum performance of the R/3 application.

INFORMIX and SAP – A strong partnership

The partnership between SAP and Informix is free of conflicts – the foundation for leading technology and long lasting investment security for medium sized to multinational enterprises worldwide and on any platform.

By the end of 1996 the number of global R/3 installations with Informix passed the 1000 mark in more than 40 countries. The availability of the OnLine Dynamic Server for Windows NT will further grow the joint business.

International References

■ KLUDI Armaturen

Germany (see picture on front page)

Currently more than 50 users work productively with R/3 and Informix. In future project stages, this number will be extended to 600 users.

■ STARR Fräsmaschinen AG

Suisse

At present up to 50 users are working productiv with SAP R/3 and Informix

■ Bosch-Siemens Hausgeräte GmbH

Germany

The company plans to employ R/3 and Informix in 19 production facilities worldwide.

■ Italian Postal Services

Italy

The Italian Postal Services are currently extending their R/3 installations. By the end of this project, more than 20.000 R/3 users will be working with the R/3-Informix solution.

For more information, please contact us using the numbers listed below.