

## R/3® System

Java, the hot new machine-independent programming language developed by SUN Microsystems, Inc., is the basis for SAP®'s new R/3 ultra-thin GUI client.

The Java-based SAPGUI emulates R/3's standard GUI and enables Internet users to access familiar R/3 transactions using common World Wide Web browsers. SAPGUI in Java provides platform independence for R/3 clients, and enables the R/3 System to be accessed from the new breed of Network Computers.

## SAPGUI in Java

### Multi-platform Java clients open R/3 to the Internet

#### Java is a Cool Language

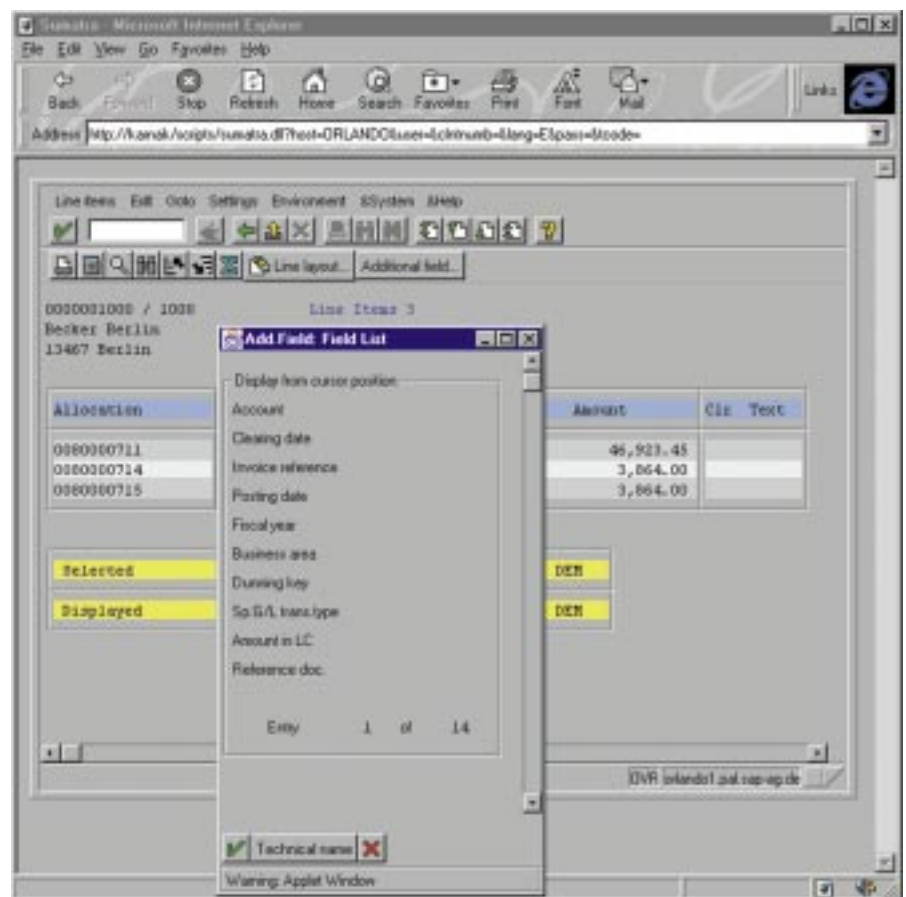
Java is an object-oriented language that is derived from C++. Like ABAP/4, Java is bytecode-interpreted instead of compiled for native machine instruction. As an interpretive language, Java is both flexible and embeddable.

The new SAPGUI in Java has been designed from the ground up in an object-oriented manner to reap all the benefits of Java.

#### Access R/3 Transactions Over the Web

The SAPGUI in Java leverages R/3's visionary multi-tier architecture to provide ready-to-use extended supply chain solutions for the Internet. Running in applet mode, the R/3 SAPGUI in Java can be embedded in Microsoft's Internet Explorer, the Netscape Navigator, or any other Java-enabled Web browser.

You can exploit the power of the Web to give your users world-wide access to your R/3 Systems.

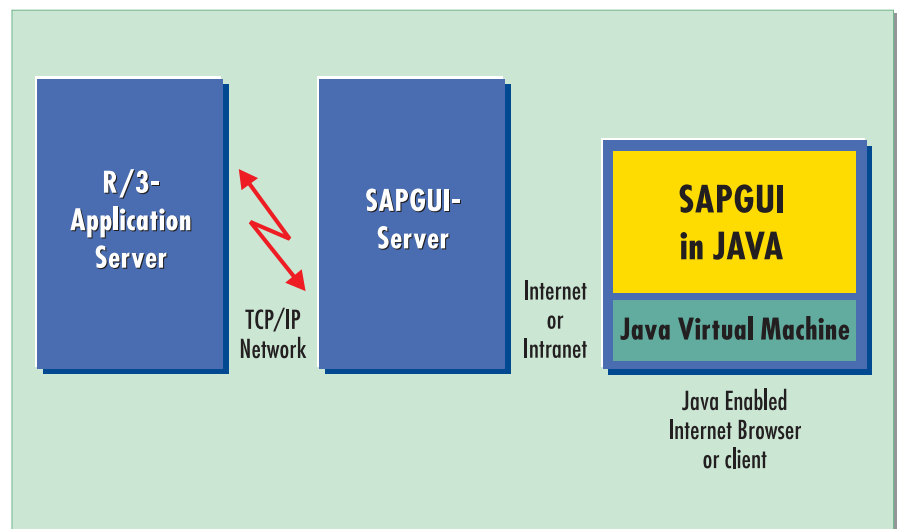


## No Retraining

SAPGUI in Java has exactly the same look and feel as the standard SAPGUI interface. You maximize your training investment, since your users won't need any special training to access R/3 transactions over the Internet. Nevertheless, SAPGUI in Java can easily be enhanced and custom-tailored to provide implementation-specific user interfaces.

## Platform Independence

R/3's SAPGUI in Java benefits from the inherent portability that comes with the Java language. While the standard SAPGUI runs on Windows, OS/2, Macintosh, and UNIX platforms, SAPGUI in Java runs on a Java Virtual Machine, which is hardware independent. Hardware that has not been supported by the SAPGUI software (for example, Network Computers) can now run SAP client software.



## Architecture

SAPGUI in Java runs on a central SAPGUI server. Client machines need only a Java-enabled browser to access R/3 Systems from any location worldwide. Since no special software needs to be installed on client machines, there is no administration or maintenance effort on the client side.

This architecture allows you to conserve valuable administration and maintenance resources by providing a homogeneous network infrastructure for both internal and external communications.

## Availability

SAPGUI in Java is available with R/3 Release 3.1. The Release 3.1 installation CD includes a setup program that automatically installs all the necessary components on your SAPGUI server. SAP also provides a help file that contains all the information you need to run the SAPGUI in Java.

## Technology and Service

R/3 software is based on client/server architecture. R/3 is designed as an open system for use on operating systems from a variety of vendors. Along with the software, SAP offers you a complete spectrum of services: professional consulting in organizational and technical issues ranging from project planning to system implementation, qualified staff training and 24-hour hotline support.

SAP's quality management system for software development meets the international ISO 9001 standards.

Find out more. Call or write us.