

R/3® System

R/3 endusers can work economically and efficiently with the SAPGUI (SAP Graphical User Interface) in R/3. To enhance the already versatile options of the SAPGUI, SAP now provides a standard option for integrating any desktop applications in the R/3 System as of Release 4.0. This technology represents a new dimension of possibilities for improving efficiency and optimizing user-friendliness.

Desktop Integration in R/3 4.x

The outside-in and inside-out procedures were already available in R/3 Release 3.0. In the outside-in procedure, the desktop application uses SAP Automation or RFC (Remote Function Call) technology to communicate with R/3. R/3 data is read, processed, and – if necessary – transferred back to the R/3 System. This technology uses SAP's BAPIs (Business Application Programming Interfaces) as the standard interface for desktop integration.

During the inside-out procedure, desktop applications are called from within the R/3 application. Examples include creating a letter in a word processing program from within an R/3 transaction, or uploading and downloading files in their various formats. The direct control of word processing and spreadsheet programs was also already possible through SAP Automation.

Desktop Integration in R/3 4.x

The new, uniform procedure for integrating desktop integration in SAP R/3 4.0 onwards is the ABAP Objects technology (see Figure 1). With the exception of the options in R/3 3.x described above, this procedure is the first standardized integration technology for connecting any OLE-enabled desktop applications to R/3 in a uniform manner.

A simple example of this technology is the in-place activation of Microsoft Excel 97 in the R/3 System. This means that Excel 97 is started within the SAPGUI, and a document that is managed in the R/3 System can be opened. The R/3 user sees a spreadsheet that displays the data in the form of a bar graph. The user can take advantage of the complete Excel functionality: change the appearance of the diagram, supplement the underlying data source with additional data, save

the file locally, and even send it through SAPoffice® or e-mail.

The integration of Microsoft Word 97 in R/3 4.0 transactions is illustrated in Figure 3. In this case, for example, a fax or letter is created from within the R/3 System as follows:

The sender, author, and recipient of the document are selected within the R/3 transaction.

Microsoft Word 97 is started by the R/3 System, and an appropriate document is opened and managed by R/3.

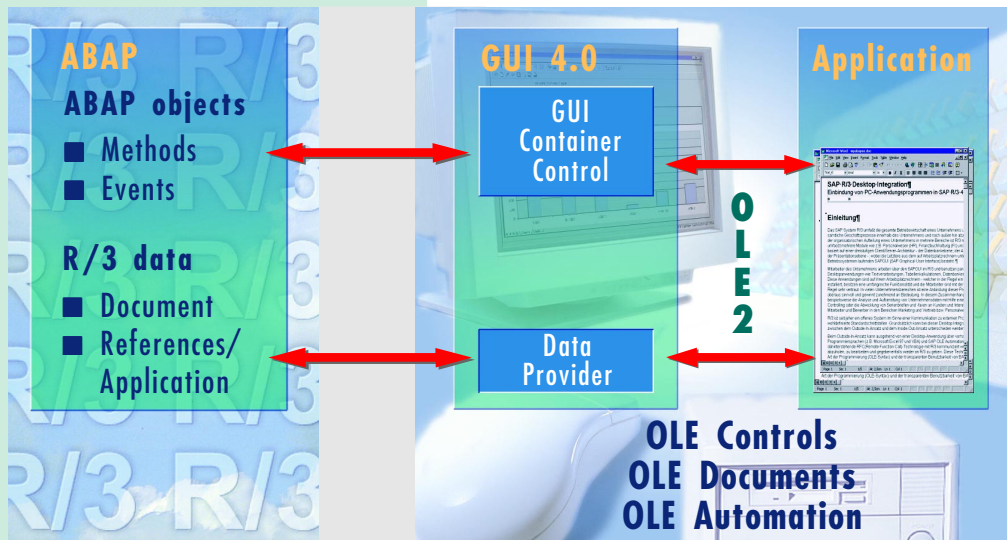


Fig. 1 Overview of desktop integration

This document includes items like the company logo, personal data, and recipient-specific data, and can then be printed or faxed from within the R/3 System.

This scenario can be implemented in the same manner with other word processing programs, such as Lotus WordPro, Corel WordPerfect, or StarWriter.

Thanks to the desktop integration options, R/3 users can work in a familiar, optically pleasing environment. Endusers of personal productivity tools and the R/3 System can use a uniform environment. The R/3 enduser can use the desktop applications best suited for the task at hand without having to leave the R/3 System.

Summary

The most important benefits of desktop integration:

- Activation of desktop applications from within the SAPGUI
- Users no longer have to open additional applications in separate windows
- Endusers are familiar with popular desktop applications
- Reduced software maintenance costs
- Increased productivity
- Reduced training costs

As a result of these latter items, the total cost of ownership is reduced significantly.

Technology and Service

The R/3 software is based on client/server architecture. It is designed as an open system that can be run on operating systems marketed by various vendors. However, SAP is not only a software provider: We also offer an extensive range of services and support centering around AcceleratedSAP (ASAP) – SAP's all-in-one solution for rapid implementation and ongoing optimization of R/3. The R/3 Service & Support program includes preventive system checks, data conversions, remote archiving and system

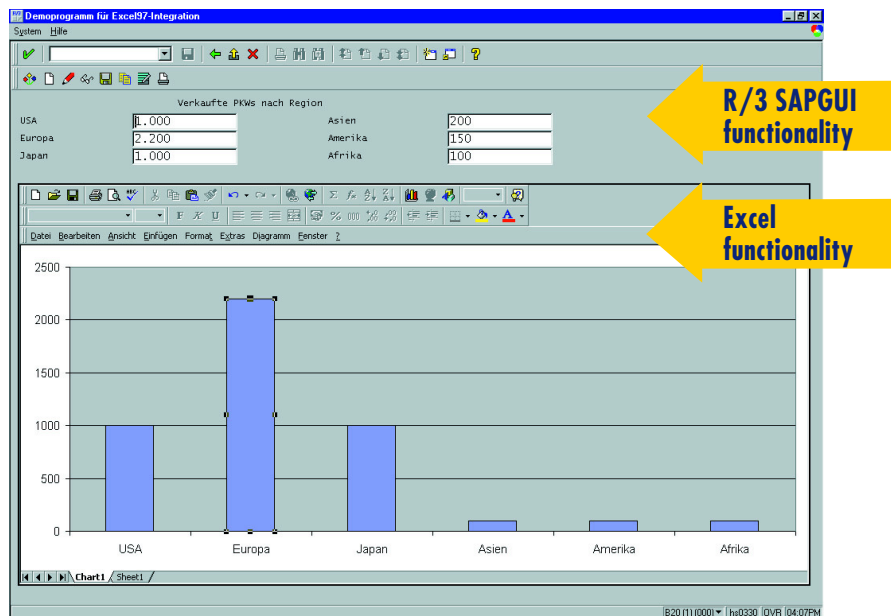


Fig. 2 In-place activation of an Excel spreadsheet in R/3

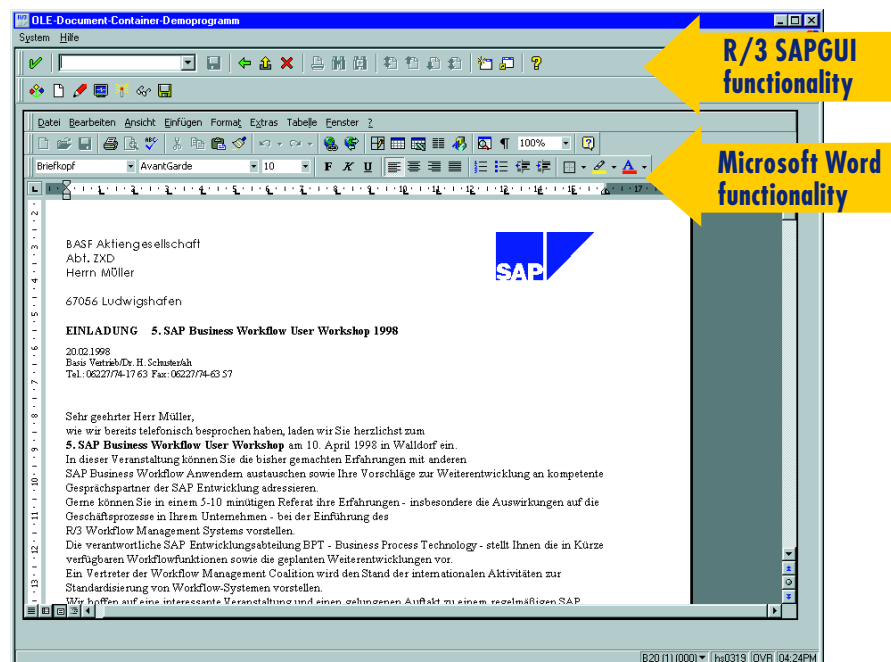


Fig. 3 Creating a letter or fax from within an R/3 transaction

upgrades. We provide expert organizational and technical consulting from the planning phase of your project right through to its execution, as well as in-depth training, and 24-hour support.

The quality management processes implemented for SAP development and SAP consulting in Germany comply with the international standard ISO 9001. SAP software is also the first packaged

enterprise application software to receive "Ergonomics approved" certification for the international standards ISO 9241 and ISO 13407.

Interested? Then call or write us.