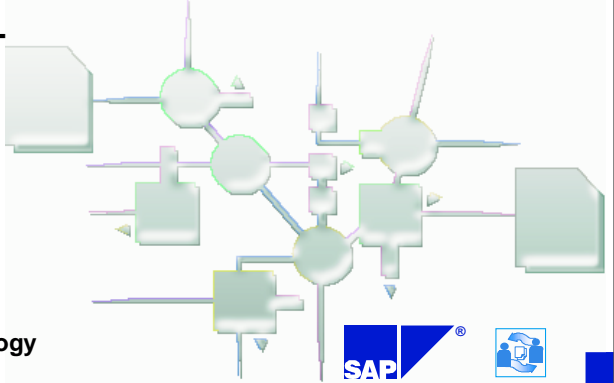


IDoc Notification by Workflow and Monitoring

- The IDoc Interface -



Thomas C. Becker
Business Process Technology
SAP AG

© SAP AG 1998 M1 SAPTechEd '98, Karlsruhe (C. Becker) / 1

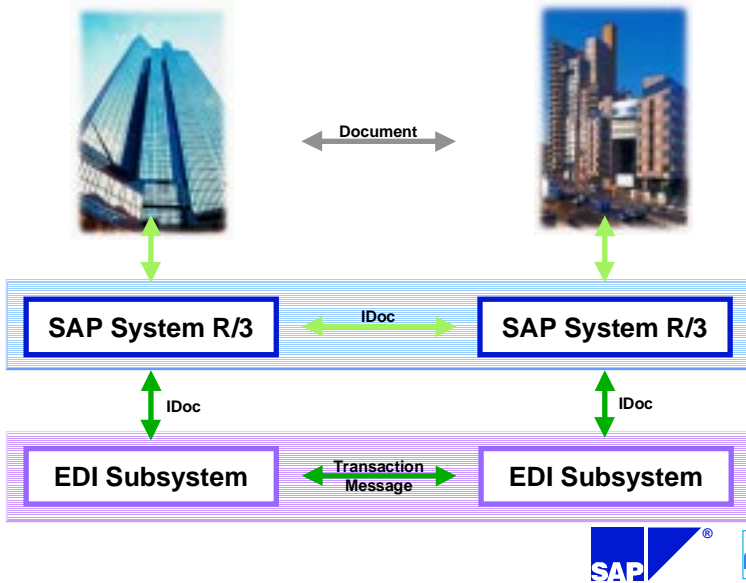
Content

- **Layers of Processing**
- Implementation of Status Report
- Notification
- Monitoring



© SAP AG 1998 M1 SAPTechEd '98, Karlsruhe (C. Becker) / 2

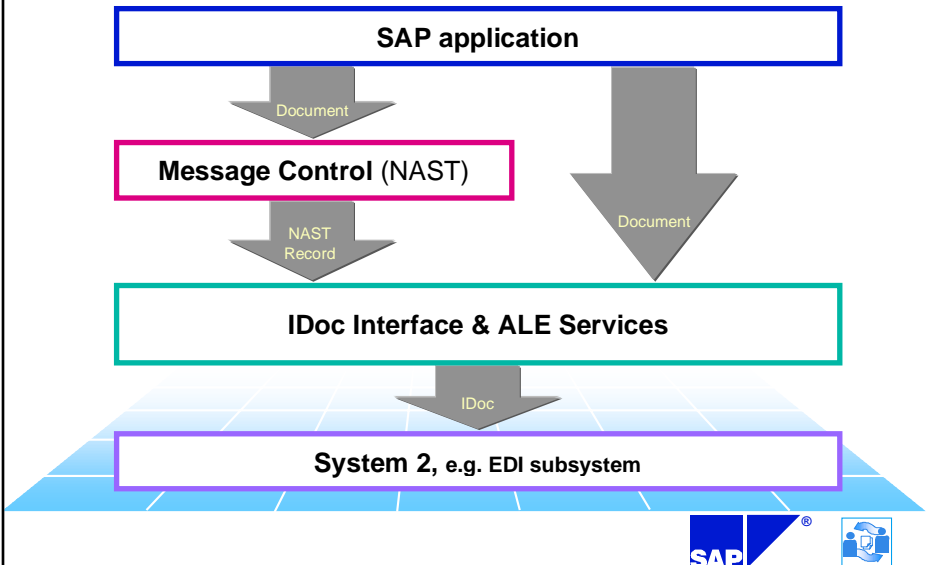
Electronic Commerce



© SAP AG 1998

M1 SAPTechEd'98, Karlsruhe (C. Becker) / 3

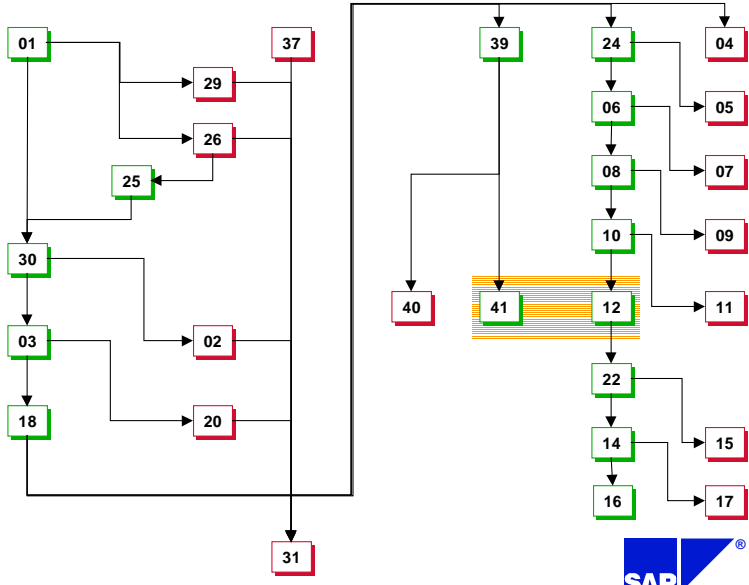
Outbound Data Flow



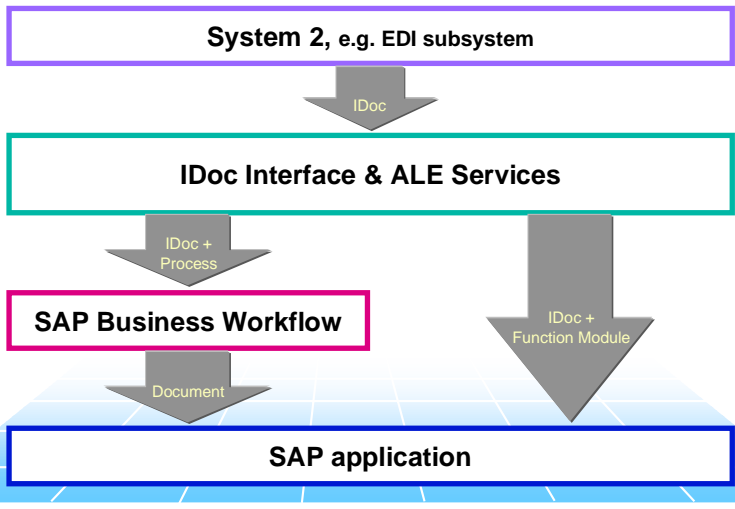
© SAP AG 1998

M1 SAPTechEd'98, Karlsruhe (C. Becker) / 4

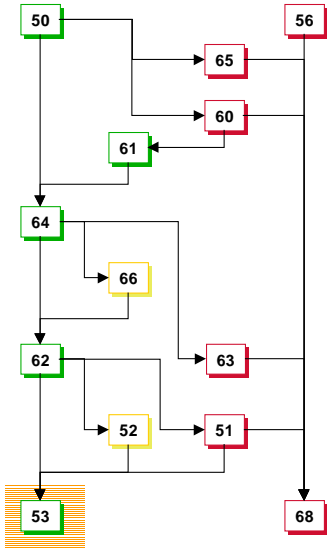
Outbound Status Transitions



Inbound Data Flow



Inbound Status Transitions

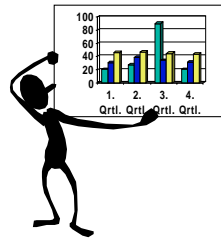


Notifications from the EDI subsystem prior to IDoc creation, can be received via message **TXTRAW**.



Notification and Monitoring

- The IDoc interface offers 2 different approaches for tracking of data load and data flow:
 - Workflow for notifications
 - Reports for monitoring
- Both approaches are based on the concept of status transitions, i.e. an IDoc changes its status from a given value to another value.
- Status transitions can be triggered by the SAP system as well as by any subsystem, e.g. EDI subsystem.

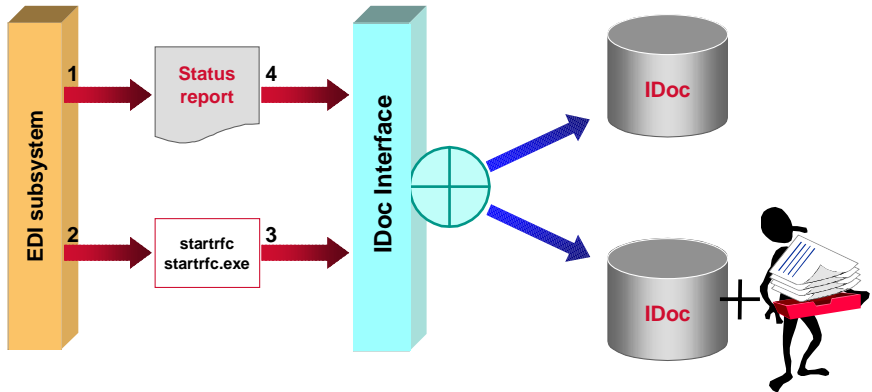


Content

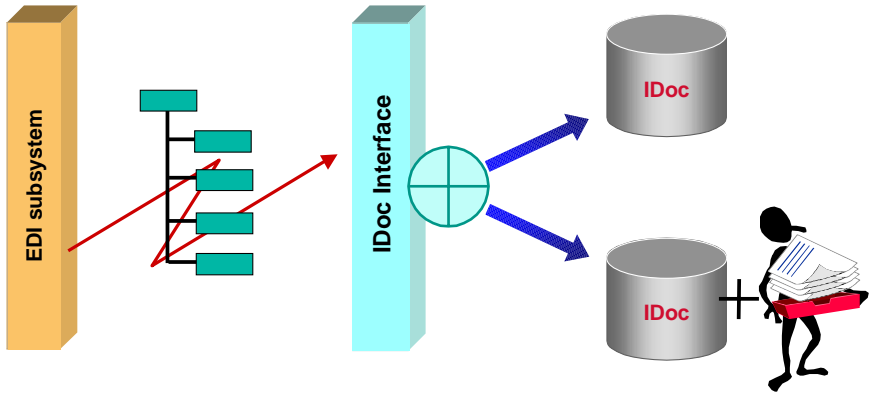
- Layers of Processing
- **Implementation of Status Report**
- Notification
- Monitoring



Status via File Interface



Status via IDoc Type SYSTAT01

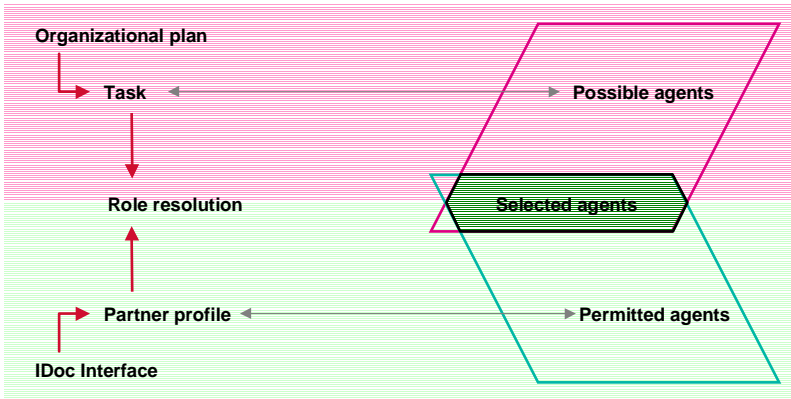


Content

- Layers of Processing
- Implementation of Status Report
- **Notification**
- Monitoring



Determination of Selected Agents



Determination of Permitted Agents

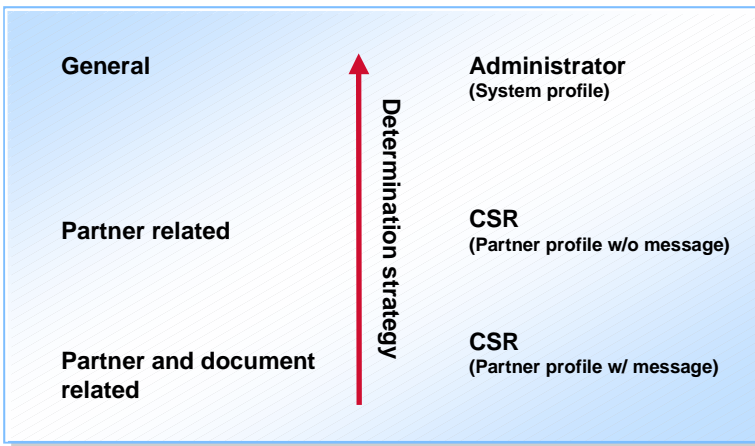
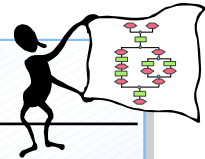


Table of Notification Tasks

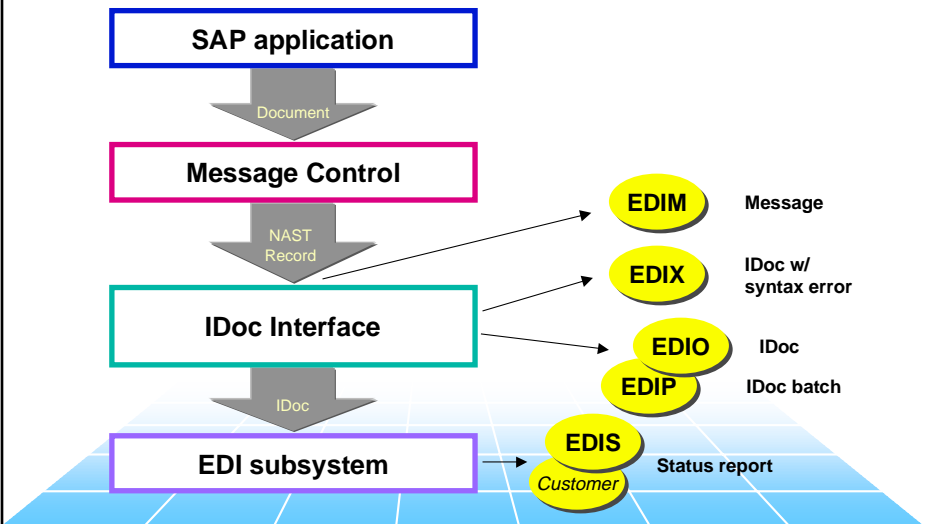


Process code	Task	Role resolution	
EDIM	TS30000020	30000001	Administrator, system profile
EDIP	TS60001307	30000001	Administrator, system profile
EDIO	TS00007989	00000134	CSR, partner profile
EDIX	TS00008070	00000134	CSR, partner profile
EDII	TS00008068	00000134	CSR, partner profile
EDIY	TS00008074	00000134	CSR, partner profile
EDIS	TS30000078	30000001	Administrator, system profile
<i>RSEIDOCM application</i>	TS30200108 <i>TSnnnnnnnn</i>	30200013 00000134	Party from selection screen CSR, partner profile

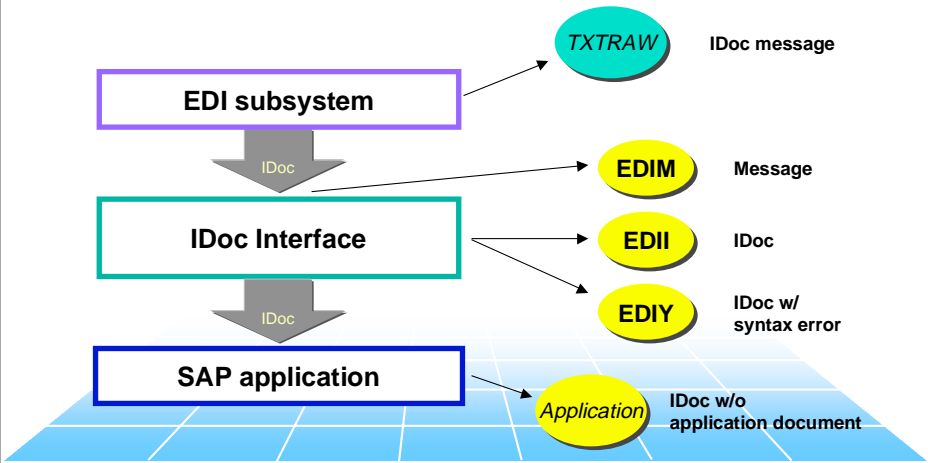
All application tasks can be found by the logical message as search term!



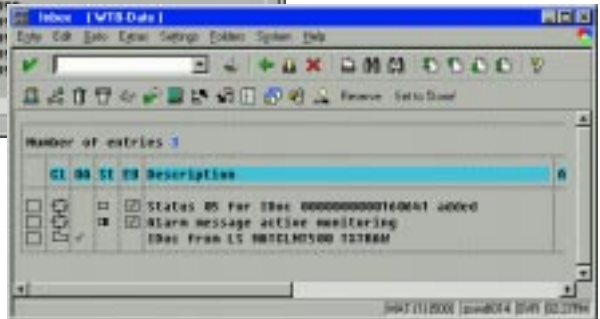
Outbound Data Flow w/ Notification Points



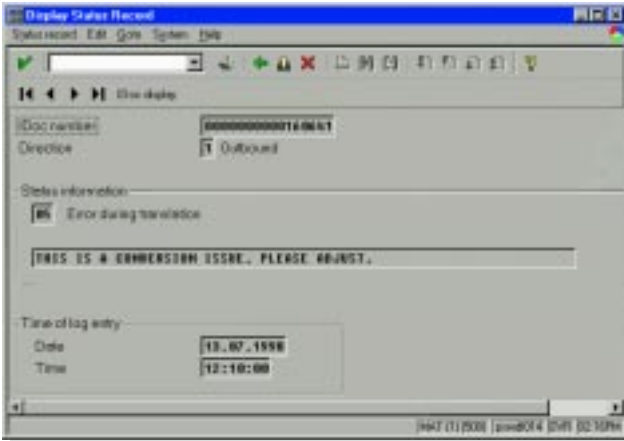
Inbound Data Flow w/ Notification Points



Example of an User's Inbox



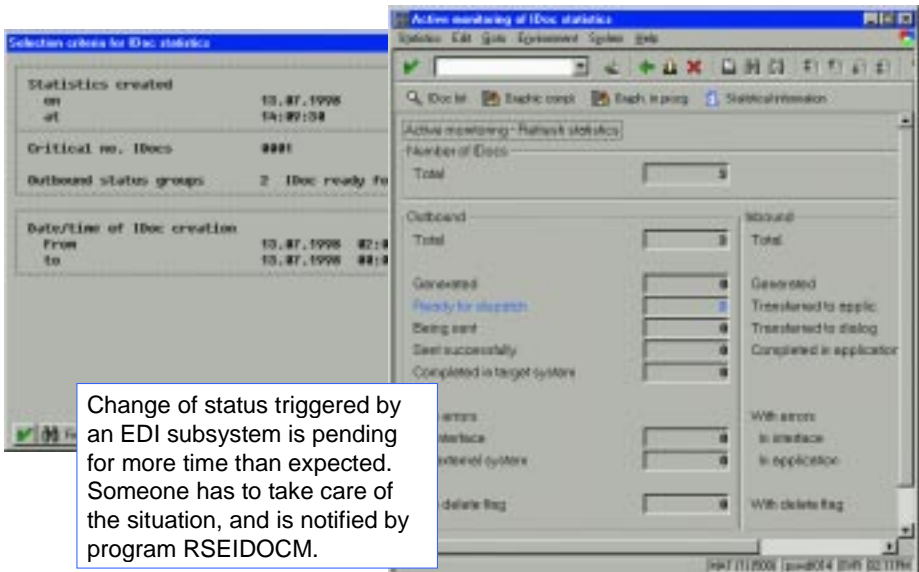
Workitem: Error in EDI subsystem



A change of status is triggered by an EDI subsystem because of translation error(s). Someone has to take care of the situation, and is notified by status processing.



Workitem: Status Transition Pending



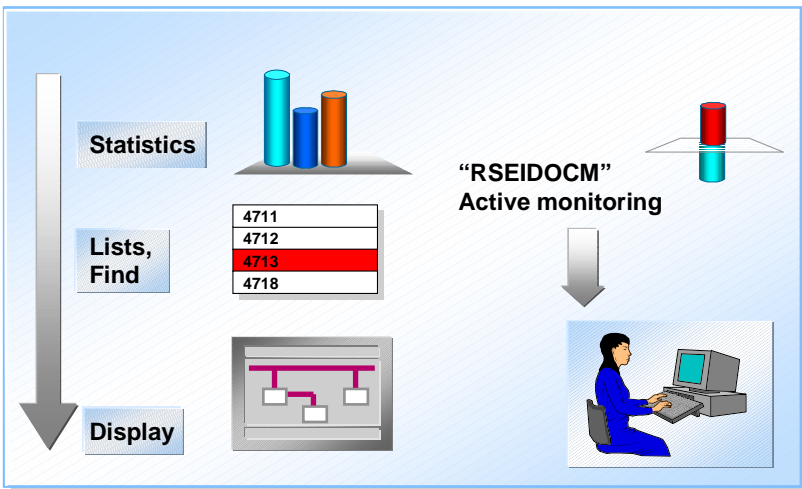
Change of status triggered by an EDI subsystem is pending for more time than expected. Someone has to take care of the situation, and is notified by program RSEIDOCM.

Content

- Layers of Processing
- Implementation of Status Report
- Notification
- **Monitoring**



Monitoring Programs



Statistics - Case 1a: Outbound P.O.

Standard selection	Number of IDs	Total
Number of IDs		
Total		11
Outbound		
Total		11
Generated		11
Ready for dispatch		11
Being sent		0
Sent successfully		11
Completed in target system		11
With errors		
in interface		11
in external system		11
With delete flag		

Purchase orders were created, and wait for their transfer to an EDI subsystem. An administrator monitors the process by the statistics transaction „WE07“.



© SAP AG 1998

M1 SAPTechEd '98, Karlsruhe (C. Becker) / 23

Statistics - Case 1b: Outbound P.O.

Standard selection	Number of IDs	Total
Number of IDs		
Total		11
Outbound		
Total		11
Generated		11
Ready for dispatch		11
Being sent		0
Sent successfully		11
Completed in target system		11
With errors		
in interface		11
in external system		11
With delete flag		

Purchase orders were transferred to an EDI subsystem, some were confirmed to SAP. An administrator monitors the process by the statistics transaction „WE07“.

© SAP AG 1998

M1 SAPTechEd '98, Karlsruhe (C. Becker) / 24

Lists - Case 2a: Outbound P.O.

The screenshot shows the SAP EDI Lists transaction (WE05) with the following data:

#	St	Message type	Var.	Fct	Number	Status de
1	08	ORDERS			1	IBac read
					2	+ Tot
					3	** Tot
					4	*** Tot

Purchase orders were created, and wait for their transfer to an EDI subsystem. An administrator monitors the process by the lists transaction „WE05“.



Lists - Case 2b: Outbound P.O.

The screenshot shows the SAP EDI Lists transaction (WE05) with the following data. The first two rows are highlighted in red, indicating errors:

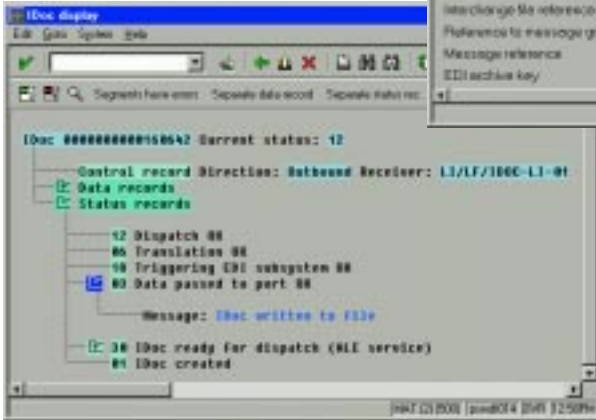
#	St	Message type	Var.	Fct	Number	Status de
1	06	ORDERS			1	Error due
					2	+ Tot
1	12	ORDERS			2	Dispatch
					3	+ Tot
1	18	ORDERS			2	Triggerin
					3	+ Tot
1	08	ORDERS			3	IBac read
					4	+ Tot
					5	** Tot
2	12	STATES			3	Applicati
					4	+ Tot
					5	** Tot
					11	*** Tot

Purchase orders were transferred to an EDI subsystem, some were confirmed to SAP. An administrator monitors the process by the lists transaction „WE05“.



Display - Case 3: Outbound P.O.

Purchase orders sent, were confirmed with EDI references by an EDI subsystem.



An administrator accesses the IDoc(s) by selecting with the interchange and message references by the display transaction „WE02“.



Case 4: Outbound P.O., but Application !

A purchase order was created, the IDoc(s) assigned to that P.O. are seen from the application.

