

Graphical Form Design with SAPscript

Dr. Wolfgang Weiss
SAP AG



© SAP AG 1998 N1 TechEd '98, KA (Weiss) / 1

SAPscript Goes Graphic - Major Steps

- Already available (since R/3 Release 4.0)
 - PC Editor
(easy to use, WYSIWYG)
 - Graphical Form Painter
(drag & drop, cut & paste)
- The next step (1999)
 - Graphics in Forms
 - Extended table processing
 - Smart Forms
(automatic generation of
print programs)
- Our vision
 - HTML/XML as standard text format



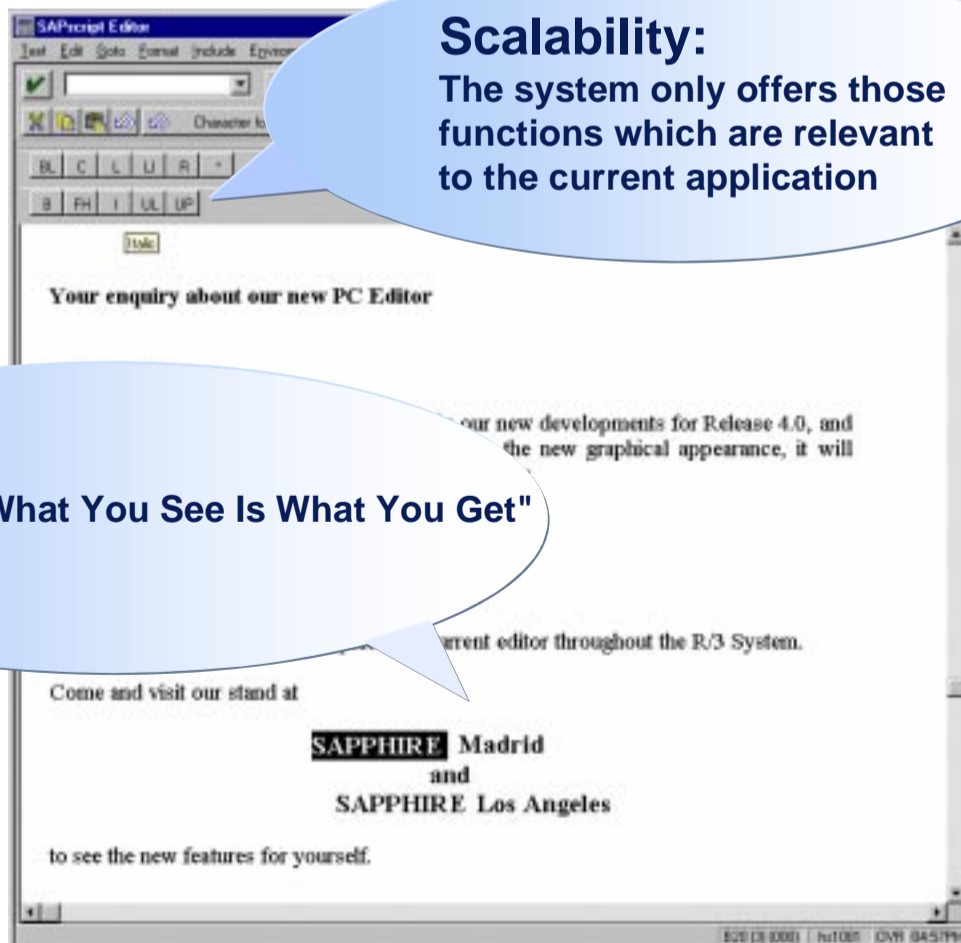
© SAP AG 1998 N1 TechEd '98, KA (Weiss) / 2

SAPscript Benefits

- **Ease-of-use**
- **Multilingual capability**
 - PC Editor also supports Asian languages
 - Country-specific address editing, multiple currencies
- **High performance when printing in large quantities**
- **Uniform corporate design in documents**
- **Fully integrated with R/3 applications and the ABAP Workbench**



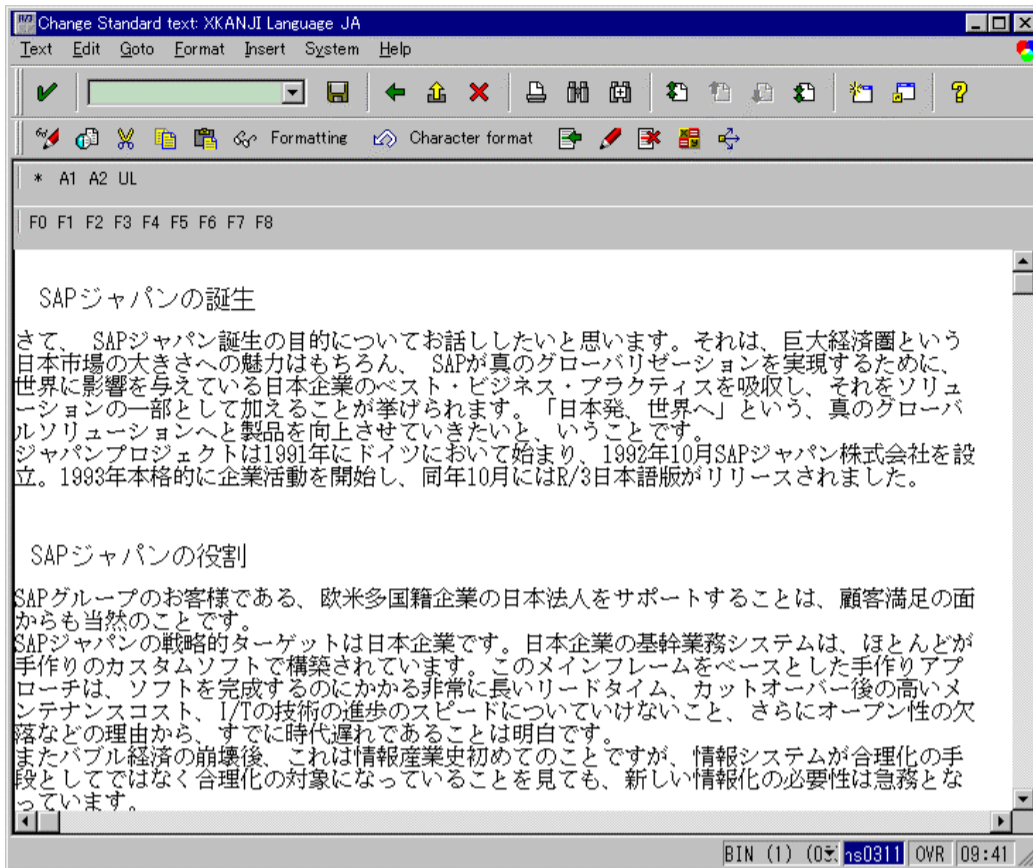
PC Editor



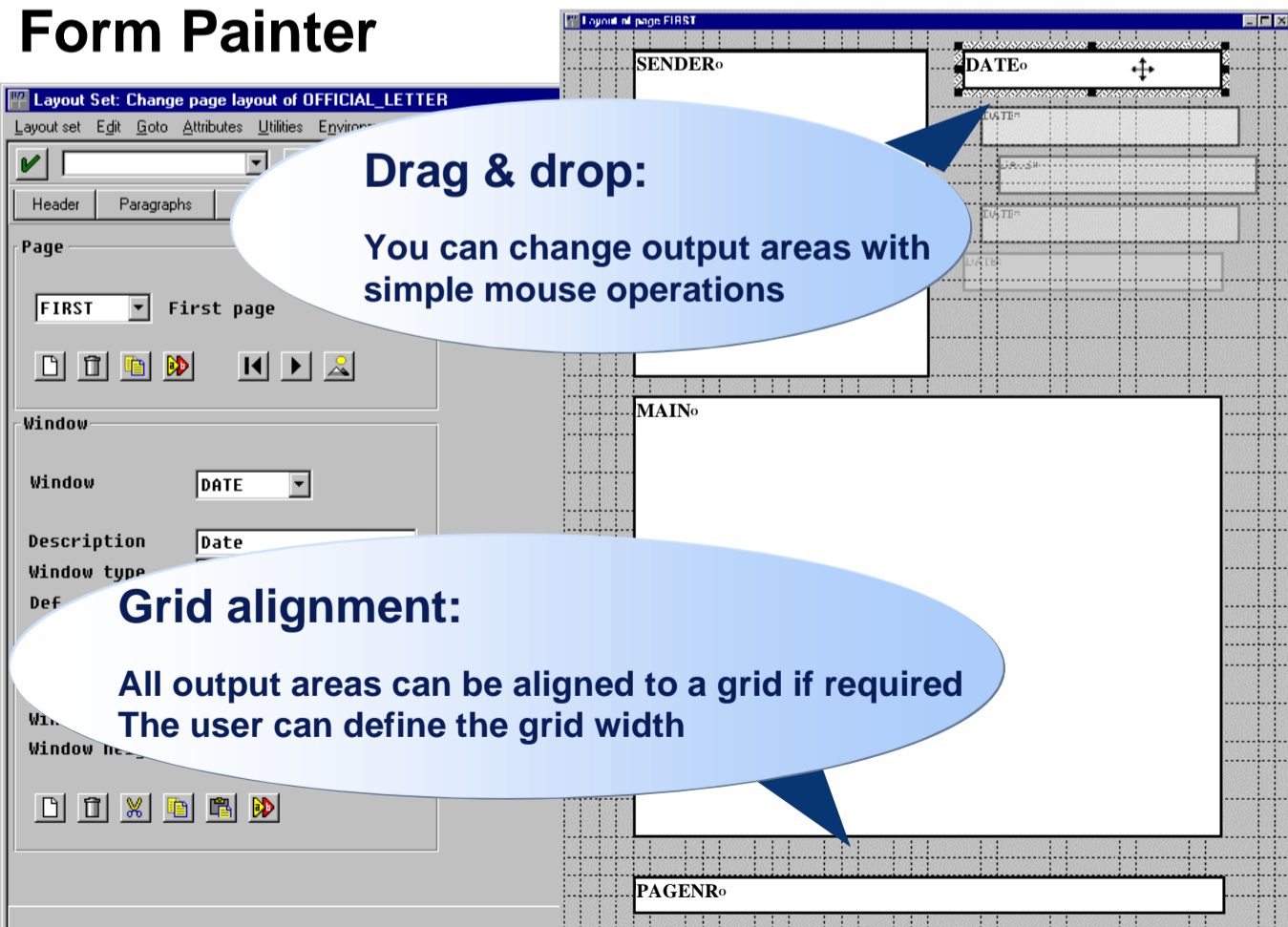
Scalability:
The system only offers those functions which are relevant to the current application

WYSIWYG: "What You See Is What You Get"

Asian Languages

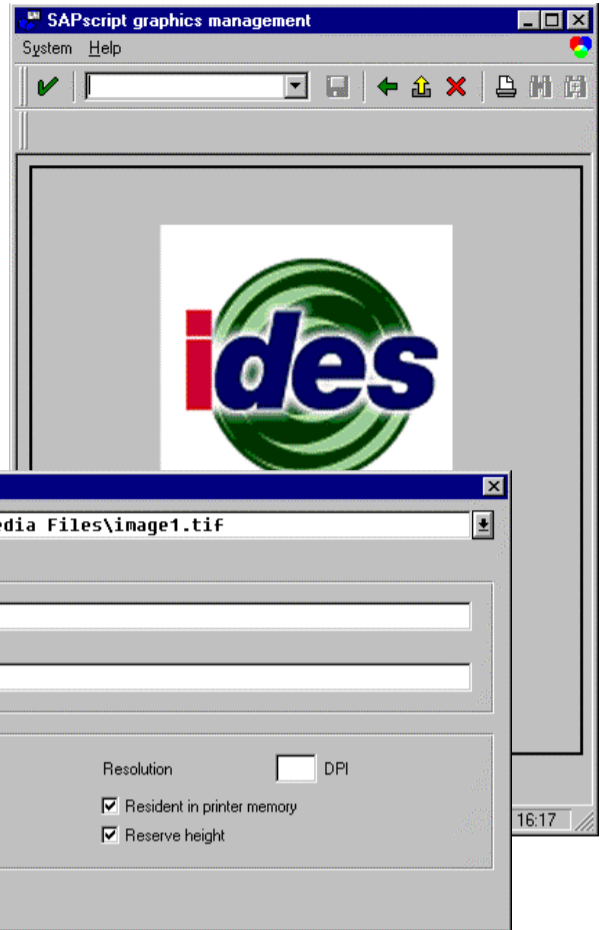


Form Painter



Graphics in Forms

- Seamless Integration of Graphics into Forms
- Easy Administration
- Standard Formats (tif, bmp)
- Preview
- Enhanced Performance



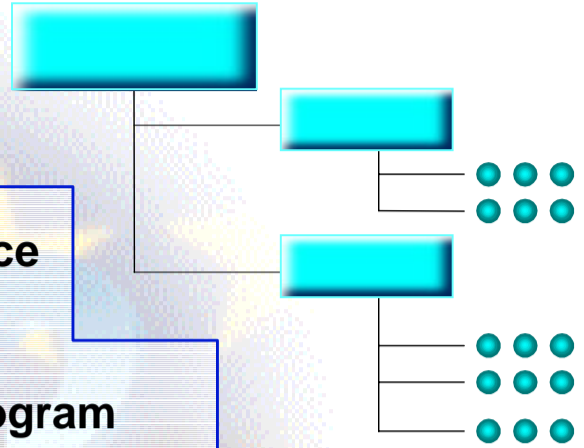
Extended Table Processing

- Static and dynamic tables
- Word wrap within table cells

Carr	Line	Flight date	Departure	Price	Currency
AA	0017	28.08.1998	13:30	738,39	DEM
	0017	22.11.1998	13:30	738,39	DEM
	0017	29.11.1998	13:30	718.842	ITL
	0064	07.09.1998	09:00	738,39	DEM
	0064	31.12.1998	09:00	738,39	DEM
AZ	0555	21.12.1998	19:00	297,00	DEM
	0788	10.10.1998	12:00	2.198,00	DEM
	0789	29.11.1998	11:45	2.198,00	DEM
DL	1699	22.11.1998	17:15	718.842	ITL
	1984	10.10.1998	10:00	718.842	ITL
	1984	31.12.1998	10:00	738,39	DEM
LH	0402	02.12.1998	13:30	593,05	USD
	2402	30.09.1998	10:30	377.726	ITL
QF	0005	19.11.1998	22:35	1.680,00	DEM
	0005	21.12.1998	22:35	1.680,00	DEM
	0006	29.11.1998	23:45	1.635.508	ITL
SQ	0002	22.11.1998	09:30	1.159,19	DEM

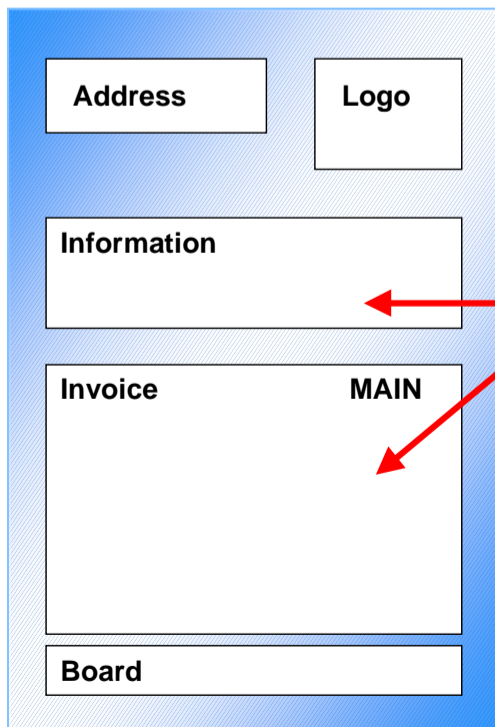
Smart Forms: Goals

- Ease of use for forms maintenance
- Tree structure for form logic
- Automatic generation of print program
- Integration into ABAP Workbench (cross references etc.)
- Creating or maintaining forms in half the time



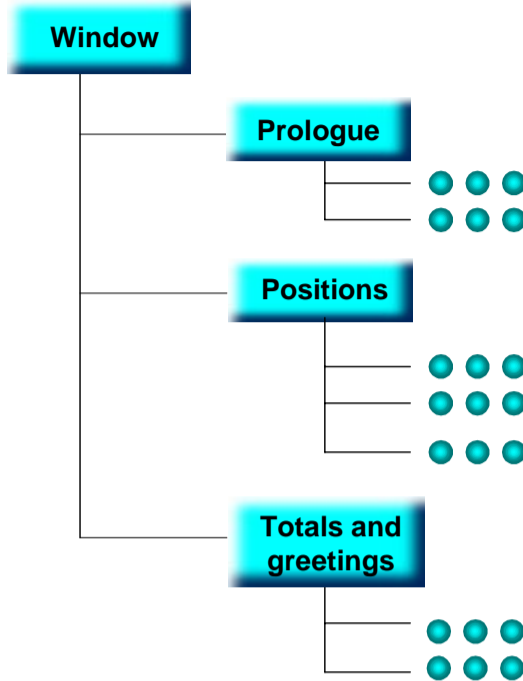
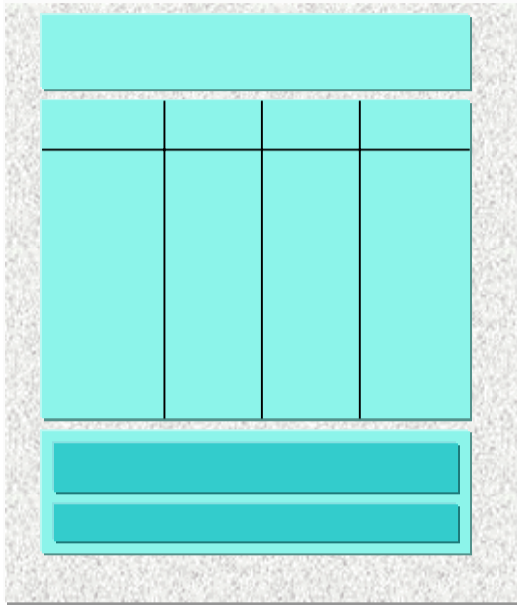
Smart Forms: Pages and Windows

Page: FIRST



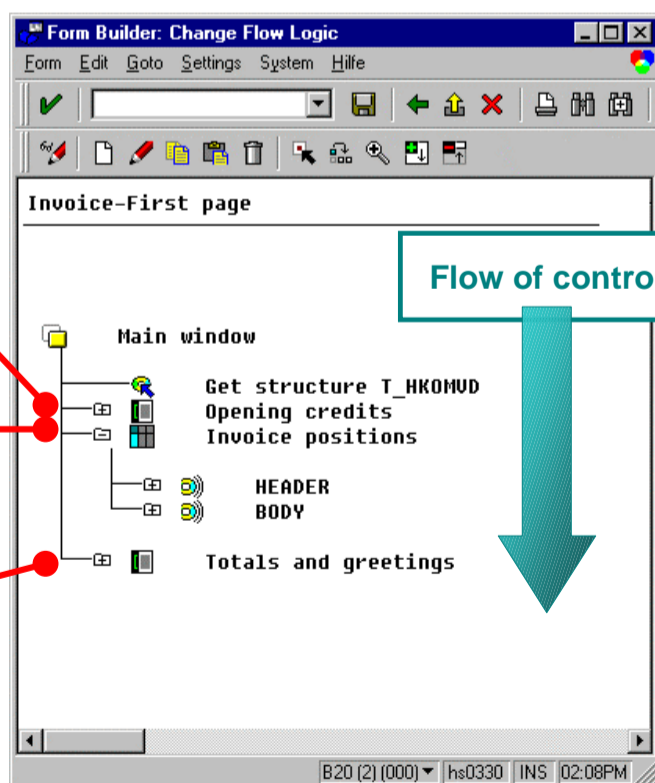
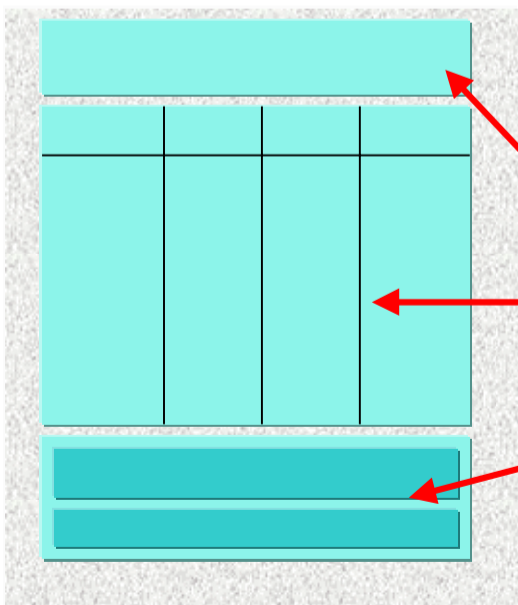
Smart Forms: Output Control (Model)

Window: Invoice (Main window)

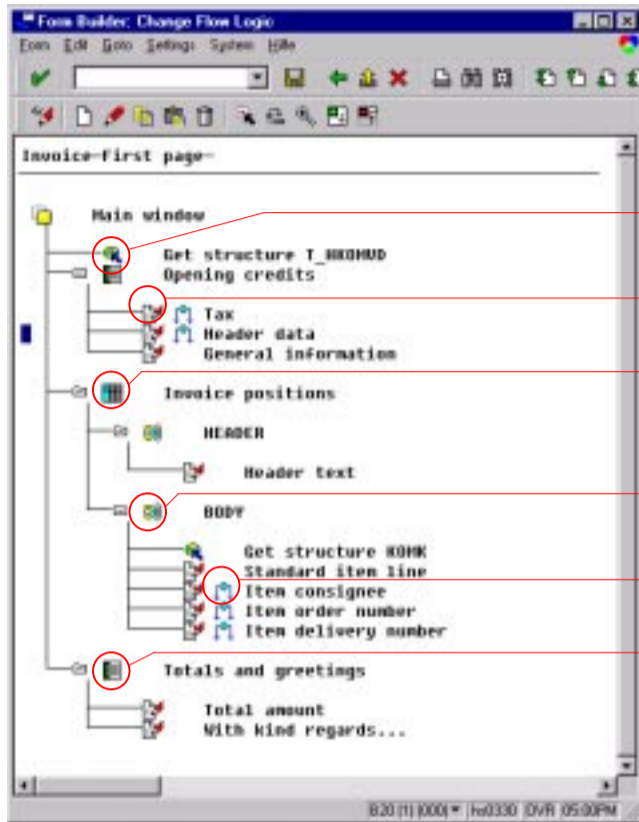


Smart Forms: Output Control (Overview)

Window: Invoice (Main window)



Smart Forms: Output Control (Detail)



Exit routine for data retrieval

Text

Output table

Output event

Condition

Section



SAPscript

- **PC Editor: easy to use**
- **Form Painter: drag & drop, cut & paste**
- **Graphics in Forms**
- **Extended table processing**
- **Smart Forms: Creating or maintaining forms in half the time**

